



SAI IMPEX

**DPSS Green Laser System with USA made Northrop Grumman Laser Source
with UK made Software Control Diode Driver
For Quality Rough Diamond Cutting Application**

Model No. : **NG-Green-14I**



Features

- ? Excellent Laser Beam Stability.
- ? Ideal for Quality Rough Diamond Cutting.
- ? Laser Source - Northrop Grumman USA made.
- ? Diode Driver-UK made software control.
- ? Smooth Cutting Surface.
- ? Higher Throughput.
- ? Power Saving of minimum 70% compared to Lamp Pumped Laser System.
- ? Very Low Operating Cost.
- ? High Precision X-Y-Z Axis.
- ? No External Chiller required.

Model No. : NG-Green-14I

TECHNICAL SPECIFICATIONS

LASER

- ? Laser Type: Diode Pumped Solid State Nd:YAG Pulsed
- ? Wavelength: 532 nm
- ? Power: 10 W-14 W (Operational) @ Tem00 QS (Max. 16W @ 9/10 Khz)
- ? Polarization: Linear
- ? Stability: 15 μ rad

CNC

- ? Type: X-Y Table With Vertical Z axis
- ? Travel Range: 150 x 150 mm (X-Y German Made Axis), 75 mm (Z India Made Axis), more Travel options available
- ? Max. Speed: 30 mm/sec
- ? Accuracy: 3 micron \pm with respect to room temperature

CHILLER

- ? Water Flow: 5 l/min (as per laser source requirement)
- ? 1 \emptyset India Made Chiller

ELECTRICAL

- ? Power: Single Phase (230 Volt AC) with Proper Ground Volt = 1 ± 0.5 Volt AC.
- ? Power Consumption: 2 KW \pm 0.5 KW.
- ? Earthing: AC Volt \leq 1 (Between Neutral & Earthing, Max. 1.5)

MECHANICAL

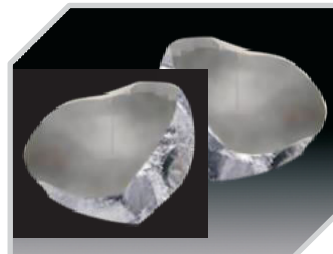
- ? Dimensions (L x W x H): 1320 x 610 x 1500 mm (Leg to Leg)
1450 x 865 x 1500 mm (Actual)
- ? Weight: approx. 440 kg

ENVIRONMENT

- ? Room Temperature: 22° C \pm 1° C
- ? Humidity: Less than 40%
- ? OEM development available
- ? Optional : Imported Chiller

(PolyScience-USA Made, Other Europe/UK Made) will be available

*Subject to change without notice



For Information & Inquiries :

Reg. Off.:
102, Pariwar Appt., 1st Floor,
58-Sahyog Co-op. Hsg. Soc.,
Sumul Dairy Road, Surat-395
008 (Guj.) INDIA.
Email : info@saiimpexindia.com

Work Off.:
7/3964, A/B, Satimata Ni Sheri,
Rudhnathpura Road, Laldarwaja,
Surat. (Guj.) INDIA.
Ph.: +91-261-2453397
Fax: +91-261-24533

Navsari Branch :
110/206, Rubi Complex,
Shantidevi Road,
Navsari. (Guj.) INDIA.
Cell No.: +91-98798 46197

Mumbai Branch :
203, A-Wing, Sarita Prabhat Ind. Estate,
W.E. Highway, Near Toll Naka,
Dahisar (E).
Mumbai-400 068. (Mah.) INDIA.
Cell No.: +91-93284 55510