



**DPSS Green Laser System with USA made Northrop Grumman Laser Source  
with UK made Software Control Diode Driver  
For Quality Rough Diamond Laser Cutting Applications**

Model No. : **NG-Green-14**



## Features

- Excellent Laser Beam Stability.
- Ideal for Quality Rough Diamond Cutting.
- Laser Source - Northrop Grumman USA made.
- Diode Driver-UK made software control.
- Smooth Cutting Surface.
- Higher Throughput.
- Power Saving of minimum 70% compared to Lamp Pumped Laser System.
- Very Low Operating Cost.
- High Precision X-Y-Z Axis.
- No External Chiller required.

Model No. : NG-Green-14

## TECHNICAL SPECIFICATIONS

### LASER

- Laser Type: Diode Pumped Solid State Nd:YAG Pulsed
- Wavelength: 532 nm
- Power: 10 W-12 W (Operational) @ Tem00 QS (Max. 16W @ 9/10 Khz)
- Polarization: Linear
- Stability: 15  $\mu$ rad

### CNC

- Type: X-Y Table With Vertical Z axis
- Travel Range: 150mm x 150 mm x100 mm (X-Y-Z German Made Axis),more Travel options available
- Max. Speed: 30 mm/sec
- Accuracy: 3 micron  $\pm$  with respect to room temperature

### CHILLER

- PolyScience-USA Made, Other Europe/UK Made
- Water Flow: 5 l/min (as per laser source requirement)

### ELECTRICAL

- Power: Single Phase (230 Volt AC) with Proper Ground Volt =  $1 \pm 0.5$  Volt AC.
- Power Consumption: 2 KW  $\pm$  0.5 KW.
- Earthing: AC Volt  $\leq$  1 (Between Neutral & Earthing, Max. 1.5)

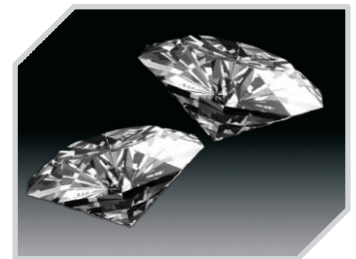
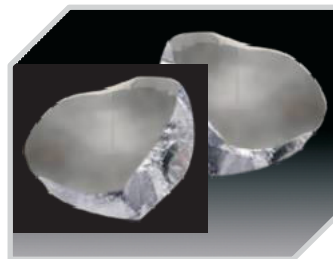
### MECHANICAL

- Dimensions (L x W x H): 1320 x 610 x 1500 mm (Leg to Leg)  
1450 x 865 x 1500 mm (Actual)
- Weight: approx. 440 kg

### ENVIRONMENT

- Room Temperature: 22° C  $\pm$  1° C
- Humidity: Less than 40%

\*Subject to change without notice



For Information & Inquiries :

**Reg. Off.:**  
102, Pariwar Appt., 1st Floor,  
58-Sahyog Co-op. Hsg. Soc.,  
Sumul Dairy Road,  
Surat-395 008 (Guj.) INDIA.  
Email : info@saiimpexindia.com

**Work Off.:**  
7/3964, A/B, Satimata Ni Sheri,  
Rudhnathpura Road, Laldarwaja,  
Surat. (Guj.) INDIA.  
Ph.: +91-261-2453397  
Fax: +91-261-2453329

**Navsari Branch :**  
110/206, Rubi Complex,  
Shantidevi Road,  
Navsari. (Guj.) INDIA.  
Cell No.: +91-98798 46197

**Mumbai Branch :**  
203, A-Wing, Sarita Prabhat Ind. Estate,  
W.E. Highway, Near Toll Naka,  
Dahisar (E).  
Mumbai-400 068. (Mah.) INDIA.  
Cell No.: +91-93284 55510